



CLOUDBURST

AERIAL FIRE SUPPRESSION EQUIPMENT

Better by Design



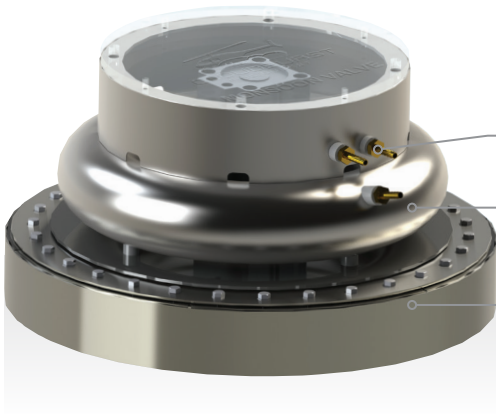
www.imsltd.co.nz

The **Cloudburst** Fire Bucket has been designed to be strong, simple, lightweight, and extremely effective and is being utilised throughout the world achieving superior aerial fire suppression results.



CLOUDBURST MONSOON & CYCLONE

Cloudburst a modern and reliable approach to aerial fire suppression. The 21st century features of the Cloudburst Fire bucket provide rapid dip filling, fast valve operation, foam bladders attachable to the wall of the bucket to keep chemical clear of your aircraft and 24/7 spares and after sales support making the Cloudburst Fire bucket a wise investment

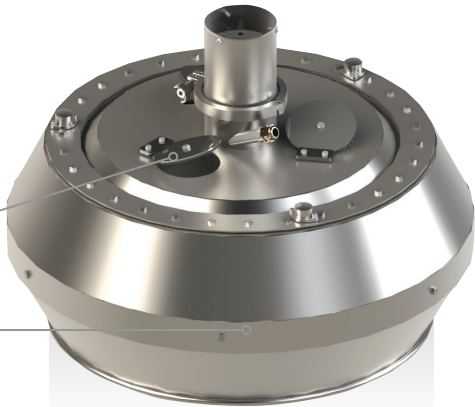


MONSOON VALVE

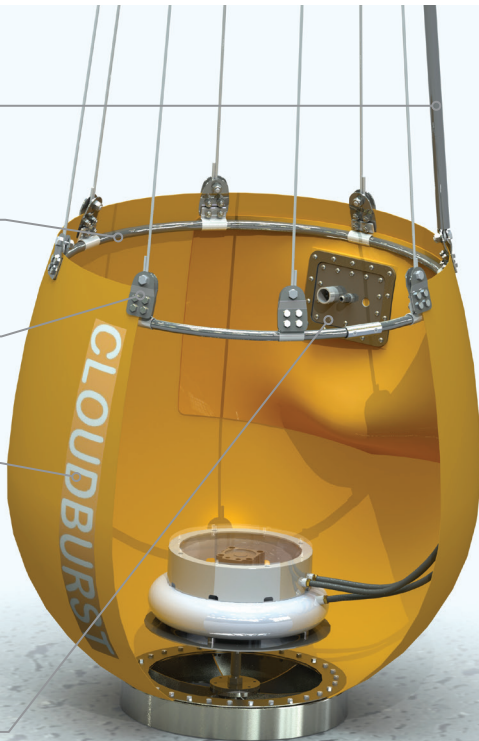
- [Pneumatically Operated]
- [Valve Head, Housing Air Receiver]
- [Variable Flow Rate Valve, used when a slower discharge rate is required]
- [Stainless Steel Corrosion Resistant valve and body with multi drop as standard provides a column of water for concentrated fire attack with an attachment available for a conical pattern for a more broad coverage.]

CYCLONE VALVE

- [The Cyclone Valve is a unique system to Cloudburst utilizing the latest technology with minimal energy input required from the helicopter.]
- [Stainless Steel Corrosion Resistant valve and body, providing a column of water for concentrated fire attack.]



- [Air supplied from the Cloudburst Control Module or direct from Aircraft Bleed Air ensures the valve is charged and ready to operate at any stage of flight.]
- [The Cloudburst Flexible Folding ring ensures the Cloudburst Fire Bucket retains its shape and flight characteristics and filling operation during use.]
- [Stainless Steel Lift Straps and Lift Plates to withstand a high level of abrasion and the various water sources used to fight fires.]
- [The bucket is made of a tough and durable fabric, an industry recognised super material that is durable yet flexible. It is strong, load bearing, and impact resistant, while also able to withstand high operating temperatures. The same material is used by the US Navy and US Coastguard because it is non-marking, has good UV stabilization and strongly resists the growth of algae and fungus.]
- [The Cloudburst Foam injection system is available across the range of models and simply attaches to the existing hard points offering a simple, effective, and reliable foam injection system.]



Volume:

US Gallons	Liters
53	200
74	280
111	420
132	500
169	640
198	750
232	880
264	1000
317	1200
370	1400
423	1600
476	1800
528	2000
660	2500
793	3000
925	3500
1057	4000
1321	5000
1981	7500
2641	10,000

CLOUDBURST ACCESSORIES



Foam injection:

(Cyclone and Monsoon)

Attachable to the wall of the Cloudburst Fire Bucket is the unique, compact and effective foam injection system with agitation system. The system design ensures the precise quantity of foam is injected into each load of water and mixed thoroughly ensuring a 100% foam to water.

Foam Controller:

(Cyclone and Monsoon)

The foam controller ensures the quantity of foam being injected into each load of water is accurate and consistent.



Long Line:

(Cyclone and Monsoon)

Cloudburst Long Line systems are configured specifically for the bucket and helicopter combination, with all necessary service lines built into the zipped cover of the long line. The Cloudburst Long Line is available in your choice of length to suit your operation.



Ground Handling Trolley:

(Cyclone and Monsoon)

For larger systems, we recommend the use of a purpose built ground handling trolley for manoeuvring your Cloudburst Fire Bucket. The purpose built Ground Handling Trolley has lockable wheels and a design to keep the bucket captive when required.

Cloudburst Control Module:

(Cyclone and Monsoon)

The Cloudburst Control Module is a fully integrated system giving you full control of all systems on your Cloudburst Fire Bucket including valve control, foam injection timing and Shallow Fill Pump Control. It also includes a counter to record foam injection and an adjustable timer to regulate foam injection rates



Cloudburst Compressor Module:

(Monsoon only)

The Cloudburst Compressor Module supplies the Cloudburst Monsoon series with the necessary air supply to operate the Multi Drop Valve. With an air accumulator inside this unit coupled with an accumulator built into the valve, there is always a large store of compressed air to operate the bucket systems regardless of the stage of flight when bucket actuation is required.



Cloudburst Power Module:

(Monsoon only)

The Cloudburst Power Module provides the entire Cloudburst System with the necessary energy to operate all aspects of the bucket when aircraft power supply is not available.



Carry / Stowage bag:

(Cyclone and Monsoon)

Compact and tidy, all Cloudburst fire buckets come complete with a carry bag or protective wrap.



Cloudburst Shallow Fill Pump:

(Monsoon only)

Developed to be both effective and easy to use, the Cloudburst Shallow Fill Pump is built into the valve of the Cloudburst Fire Bucket giving it good mechanical protection when the bucket is manoeuvred into tight spaces for filling. With a filling rate in excess of 55 litres per second, and a minimum filling depth required of 0.5 meters, the Cloudburst Shallow Fill Pump is a vital tool when available water sources are limited.

CLOUDBURST DAM

The **Cloudburst Dam** has been developed as a simple and compact water dam that is quick and easy to set up, dismantle and transport. We understand that when you need to use a dam like this, time and ease of use is paramount.



It's so quick and easy to use! Simply unzip the bag and pull out the attached dam and ground sheet and spread out.



Part Number	US Gallon	Diameter (m)	Height (m)	Top opening Diameter (m)	Packed Weight (lbs)
CD5000P	1,316	2.90	1.20	1.30	70
CD5000F	1,316	2.90	1.20	1.30	73
CD10000P	2,632	3.95	1.20	2.00	96
CD10000F	2,632	3.95	1.20	2.00	101
CD15000P	3,947	4.15	1.30	3.00	123
CD15000F	3,947	4.15	1.30	3.00	128
CD20000P	5,263	4.80	1.30	3.40	145
CD20000F	5,263	4.80	1.30	3.40	152
CD25000P	6,579	5.10	1.40	3.80	167
CD25000F	6,579	5.10	1.40	3.80	176

Colour options available

The carry bag, dam and groundsheet are available in a range of colours.

Any size available

We manufacture the Cloudburst Dam to any volume. Please contact us to discuss your requirements.

CD Cloudburst Dam **5000** Capacity (litres)
P Pneumatic top ring **F** Foam top ring



HELI-TANK WATER AND FUEL

The **Heli-Tank** is a collapsible tank designed primarily to be slung beneath Helicopters to fly water or fuel rapidly to remote or inaccessible locations. The specifically designed pod shape of the tank enables stable flight when full or partially full, enabling partial offloading en route.

DESIGN FEATURES:

- Quick to Deploy** - easy to fill, no assembly required

Robust Construction - heavy duty for in field handling

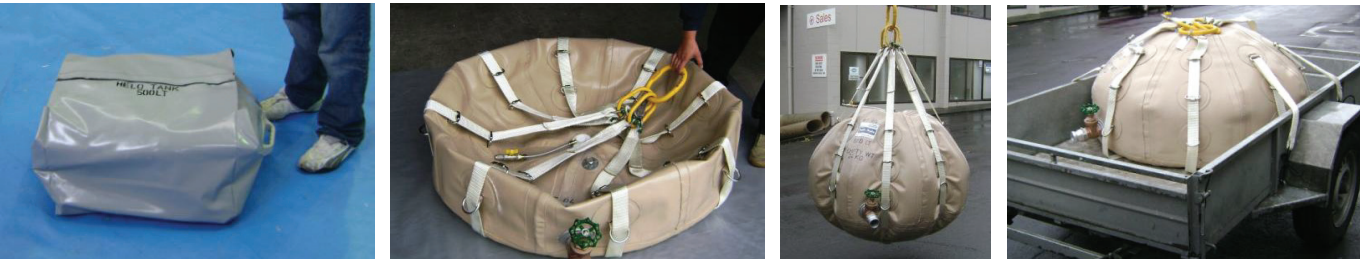
Transportable - by land based transport
- Adjustable** - self-adjusting shape for partial filling

Highly Stable - on the ground and in flight

Easy Storage - folds to a fraction of its fill size for storage

DIMENSIONS & VOLUMES:

Dimensions	500lt / 130gal	750lt / 200gal	1,000lt / 300gal	1,500lt / 396gal	3,000lt / 792gal
Base (diameter)	1.2m / 3.9ft	1.4m / 4.6ft	1.4m / 4.6ft	1.5m / 4.9ft	2.2m / 7ft
Height	0.6m / 23inch	0.75m / 2.4ft	0.95m / 3.1ft	1.3m / 4.2ft	1.6m / 5.2ft
Weight	28kg / 62lbs	35kg / 77lbs	40kg / 99lbs	55kg / 121lbs	65kg / 143lbs



OPTIONAL EXTRAS:

Static Cable (fuel):

2mm Stainless Steel flexible cable fitted to the webbing harness to provide a link from lifting ring to below the Heli-Tank for the discharge of static build-up.



TRANSPORTABLE TANK

The **Transportable Tank** was developed to utilise light commercial or military vehicles for the transport and distribution of portable water or fuels. Specially designed internal baffles and securing details give the transportable tank the ability to reduce fluid movement during transit. The tank is highly compact, lightweight and simple to use, complete with its own carry bag which also functions as a protective ground sheet and all fittings required for operation including an over pressure relief valve.

DESIGN FEATURES:

- Quick to Deploy** - no special tools required
- Highly Compact** - lightweight and simple to use
- Robust Construction** - polymer PVC is puncture and UV resistant
- Transportable** - using light commercial or military vehicles
- Stability Control** - external securing points
- Fluid Movement Reduction** - internal baffles reduce fluid movement
- Safety Valve** - over pressure relief valve

DIMENSIONS & WEIGHTS:

Capacity	1,000lt / 265gal	3,000lt / 790gal	5,000lt / 1,320gal
Length	1.6m	3.0m	4.6m
Width	1.6m	1.6m	2.0m
Height	0.35m	0.55m	0.6m
Internal baffles	2	3	5
Securing bag / ground sheet (LxW)	2.0m x 2.0m	3.5m x 3.5m	5.0m x 5.0m
Total Weight Inc protective ground tarp	15.1kg	37.5kg	51.5kg



TESTED IN THE FIELD

Developed to be used by light commercial or military vehicles for the shipment and storage of water and fuel.

Accessory: 1 x Carry bag / ground sheet (forms protective sheet when spread).

OPTIONAL FEATURES:

Portable Water Tank - Access Panel:
For maintenance the transportable tank can be fitted with a waterproof panel which enables operators to clean and dry the inside of the tank following a deployment, ready for restoring.

Branding:
The transportable tank can be supplied with company / agency / corporate branding or identification labelling.



CLOUDBURST

AERIAL FIRE SUPPRESSION EQUIPMENT



FOR MORE INFORMATION CONTACT US

32 Leyland Street
Onekawa, Napier
New Zealand
PO Box 8504
Havelock North 4157

P: +64 21 583 033
F: +64 843 5984
E: jordan@imsltd.co.nz

www.imsltd.co.nz