

The advertisement features a large background image of a helicopter in flight, silhouetted against a cloudy sky, with a red fire bucket suspended from its hoist. The bucket is positioned over a body of water. The image is divided into three main color sections: an orange section on the top left, a blue section on the bottom left, and a white section on the right. The text 'AERIAL FIRE SUPPRESSION EQUIPMENT' is in white on the orange background. The logo and product name 'CLOUDBURST FIRE BUCKET' are in white on the blue background. The website 'imsheli.com' is in white on the bottom blue bar.

# AERIAL FIRE SUPPRESSION EQUIPMENT



**CLOUDBURST**  
FIRE BUCKET  
a product by IMS

[imsheli.com](http://imsheli.com)



# Cloudburst Fire Bucket

## Considerations for selecting a Cloudburst Fire Bucket System

### Do you require the following?

- Multi-drop or single drop functionality
- Foam Injection capability
- Level Limiters (provides ability to limit the volume)
- An auxiliary power source (useful when aircraft electrical power is not available)
- Shallow Fill Pump

### Electrical Power:

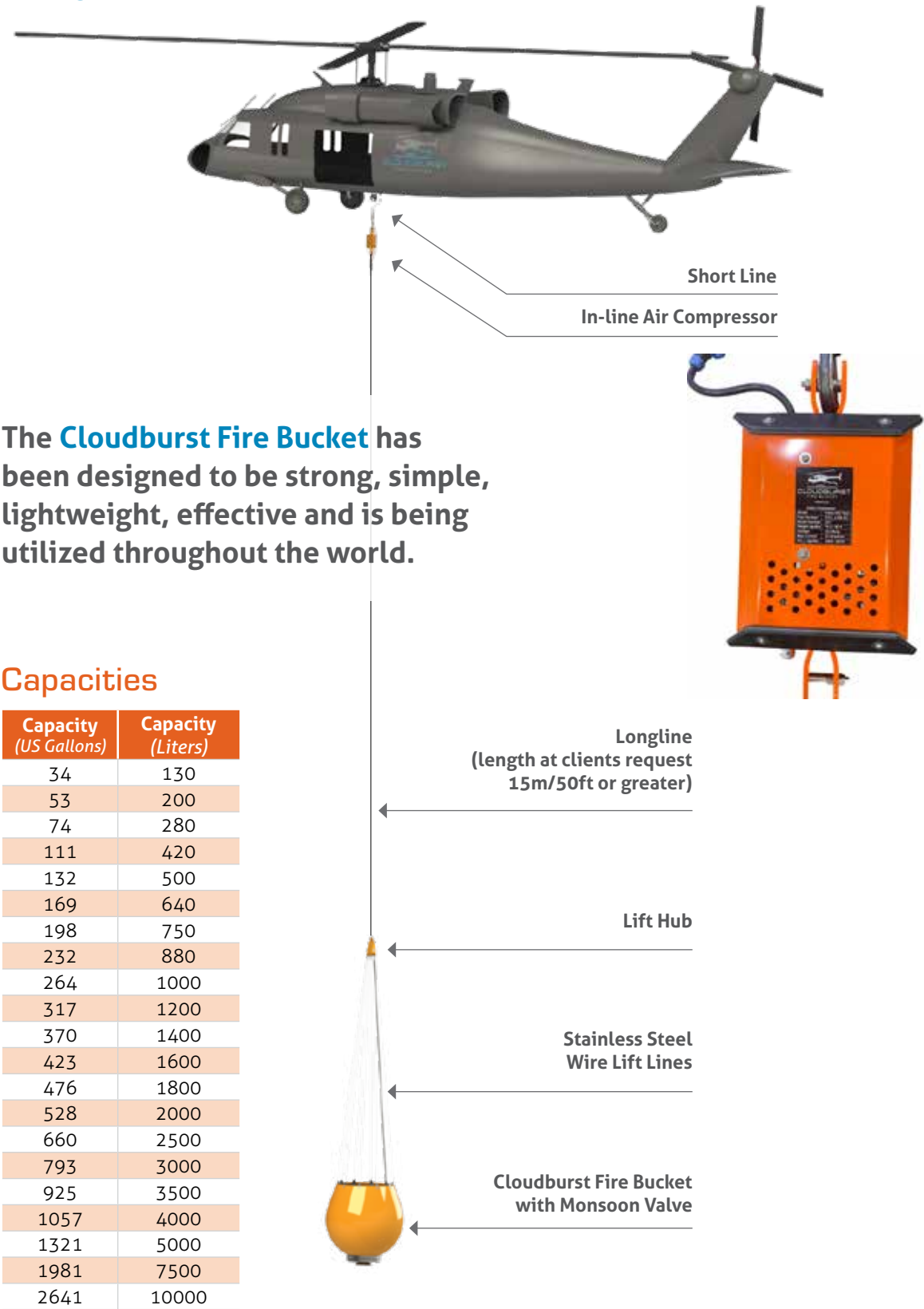
Refer to the power requirements table on page 11 for details.

### Long Line:

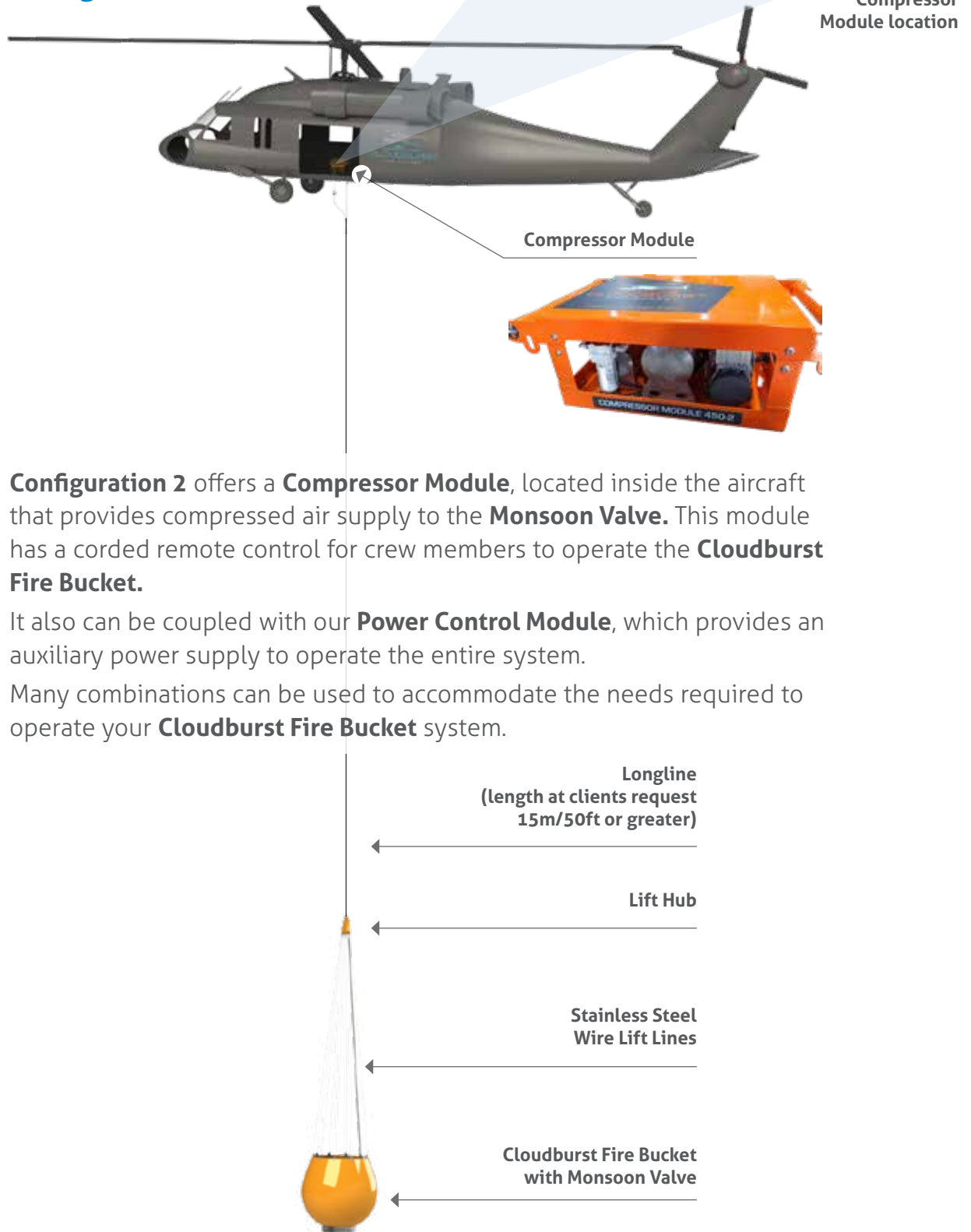
This length can be determined by the customer. A Long Line of 50ft/15m or greater is recommended with the Cloudburst Fire Bucket.



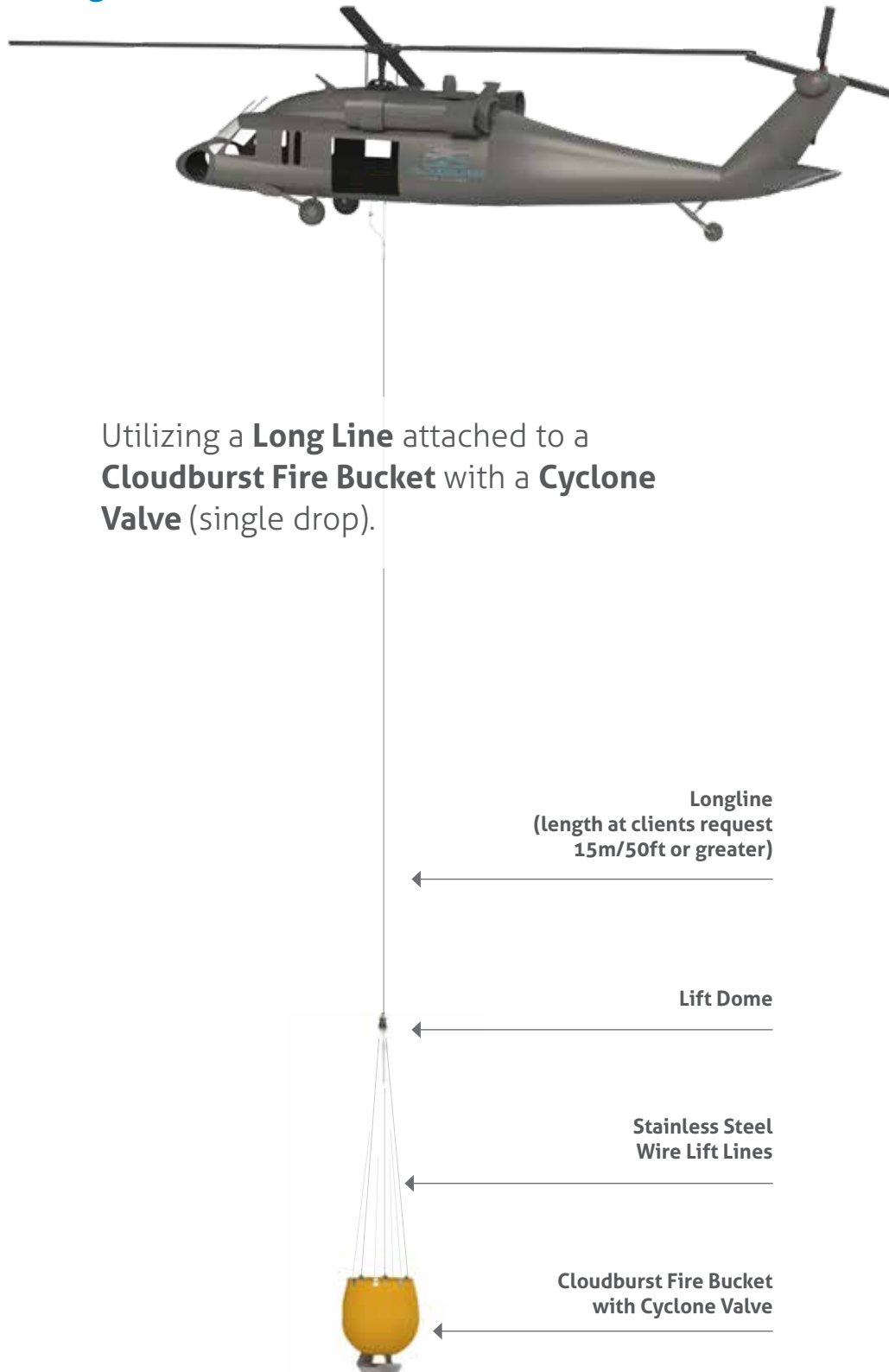
Configuration 1



## Configuration 2



### Configuration 3



**A modern  
and reliable  
approach to  
aerial fire  
suppression.**





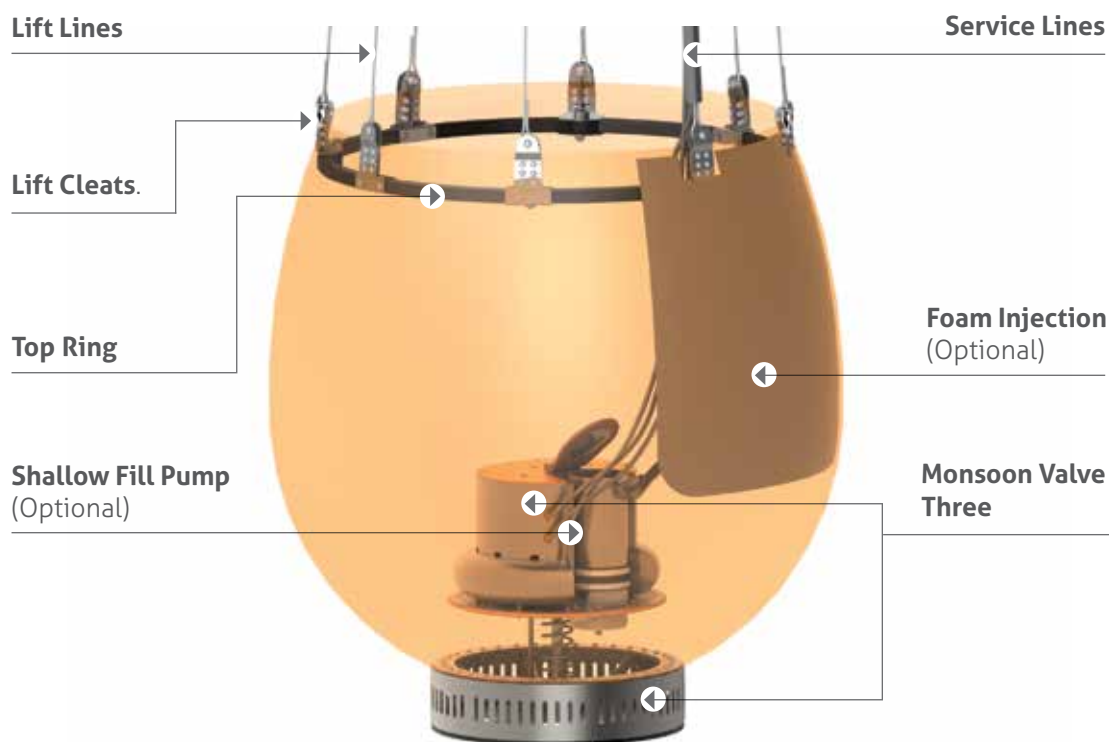


Keeping it  
simple.

# Cloudburst Features

The **Cloudburst Fire Bucket** is a wise investment for military and civilian operations around the world due to its modern features, reliability, and design.

The **Cloudburst Fire Bucket** is made of tough and durable PVC, an industry-recognized super material that is tough and flexible. It is strong, load-bearing, impact-resistant, and capable of withstanding high operating temperatures. This material is also chosen for its strength, excellent UV stabilization, and strong resistance to the growth of algae and fungi.



**Please note:** Valve size relates to bucket volume, refer to the table on page 11.



# Monsoon Valve

The **Monsoon Valve** is operated by compressed air and controlled by an electrical input providing a fast and reliable water release.

- Multi-drop
- Low maintenance
- User friendly



Valve One



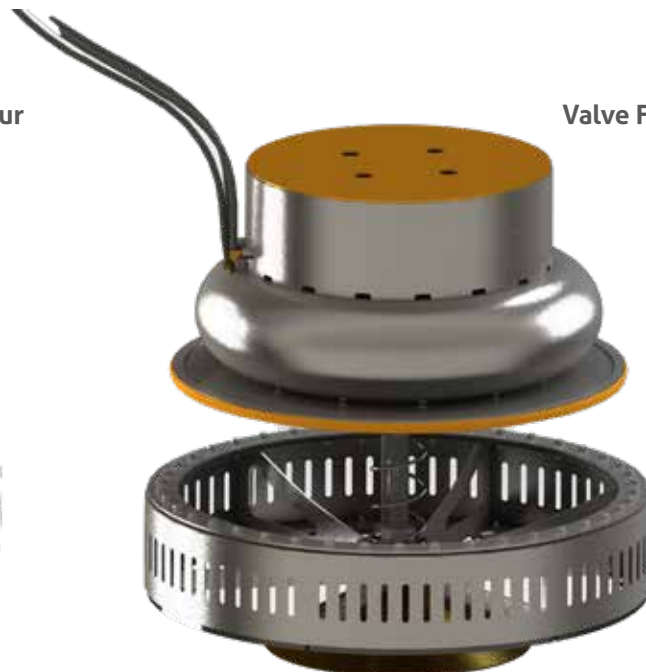
Valve Two



Valve Three



Valve Four



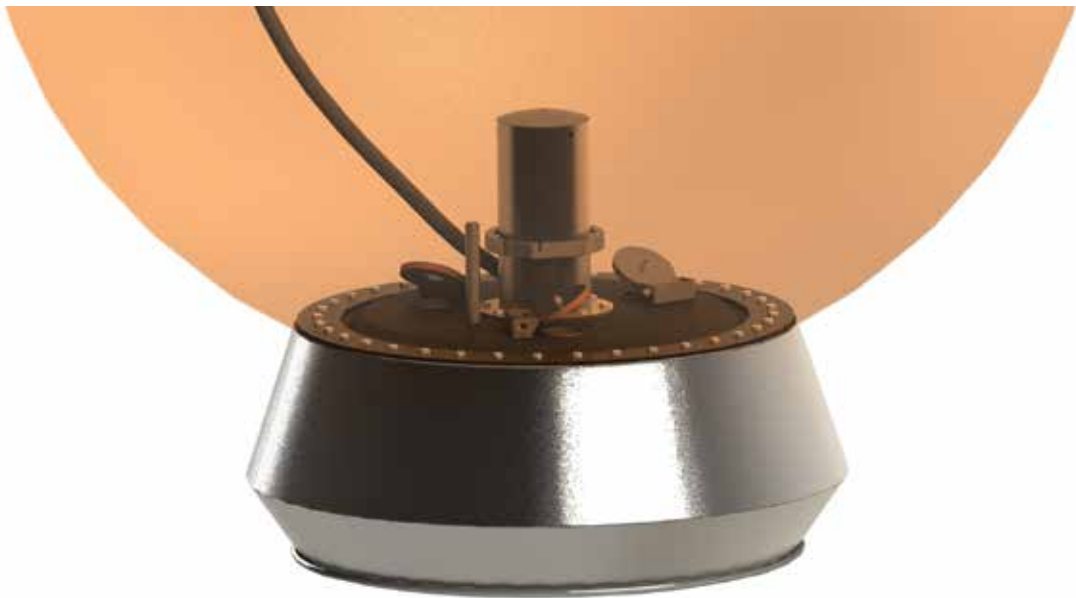
Valve Five

**Please note:** All Monsoon Valves come with a Swath Plate that can be simply fitted to the underside of the Monsoon Valve to provide a broader drop pattern.

# Cyclone Valve

The **Cyclone Valve** is electrically actuated, providing a fast and reliable water release.

- Single drop
- Less than 1 amp current draw
- Low maintenance
- User friendly



Cyclone Valve

Cloudburst Fire Bucket Model	Valve Size	Volume Litres	Volume USG	Bucket Empty Weight kg/lbs	Comp Current amps	Current Cyclone Valve amps DC	SFP Current amps DC ✱	Qty DC SFP	SFP Flow Rate DC L/ sec (G/sec)	SFP Current amps AC ^	SFP Flow Rate L/sec (G/sec)	FIS Current amps DC	FIS Weight
CB130M	Valve One	130	34	22kg / 49lbs	7.5 ~	0.5	-	-	-	-	-	3	2kg / 4.5lbs
CB200M	Valve One	200	53	25kg / 55lbs	7.5 ~	0.5	-	-	-	-	-	3	2kg / 4.5lbs
CB280M	Valve One	280	74	29kg / 64lbs	7.5 ~	0.5	-	-	-	-	-	3	2kg / 4.5lbs
CB420M	Valve Two	420	111	40kg / 88lbs	7.5 ~	0.5	-	-	-	-	-	3	3kg / 6.6lbs
CB500M	Valve Two	500	132	41kg / 90lbs	7.5 ~	0.5	-	-	-	-	-	3	3kg / 6.6lbs
CB640M	Valve Two	640	168	46kg / 101lbs	7.5 ~	0.5	-	-	-	-	-	3	3kg / 6.6lbs
CB750M	Valve Two	750	197	50kg / 110lbs	7.5 ~	0.5	-	-	-	-	-	3	3.5kg / 7.7lbs
CB880M	Valve Three	880	232	60kg / 132lbs	15 #	0.5	50	1	25 (6.6)	-	-	3	4kg / 8.8lbs
CB1000M	Valve Three	1000	263	63kg / 139lbs	15 #	0.5	50	1	25 (6.6)	-	-	3	4kg / 8.8lbs
CB1200M	Valve Three	1200	316	67kg / 148lbs	15 #	0.5	50	1	25 (6.6)	-	-	6	5kg / 11lbs
CB1400M	Valve Three	1400	368	70kg / 154lbs	15 #	0.5	50	1	25 (6.6)	-	-	6	5kg / 11lbs
CB1600M	Valve Three	1600	421	75kg / 165lbs	15 #	0.5	50	1	25 (6.6)	-	-	6	5kg / 11lbs
CB1800M	Valve Three	1800	474	81kg / 179lbs	15 #	0.5	50	1	25 (6.6)	-	-	6	6kg / 13/b
CB2000M	Valve Three	2000	526	89kg / 196lbs	15 #	0.5	50	1	25 (6.6)	-	-	6	6kg / 13/b
CB2500M	Valve Four	2500	658	134kg / 295lbs	25 0	1.0	100	2	50 (13.2)	50	100 (26)	9	8kg / 17.6/b
CB3000M	Valve Four	3000	789	146kg / 322lbs	25 0	1.0	100	2	51 (13.2)	50	100 (26)	9	8kg / 17.6/b
CB3500M	Valve Four	3500	921	152kg / 335lbs	25 0	1.0	100	2	52 (13.2)	50	100 (26)	9	10kg / 22lbs
CB4000M	Valve Four	4000	1053	165kg / 364lbs	25 0	1.0	100	2	53 (13.2)	50	100 (26)	9	13kg / 28.6lbs
CB5000M	Valve Four	5000	1316	171kg / 377lbs	25 0	1.0	100	2	54 (13.2)	50	100 (26)	9	13kg / 28.6lbs
CB7500M	Valve Five	7500	1974	199kg / 439lbs	40 +	-	-	-	-	-	100 (26)	12	18kg / 39.6lbs
CB10000M	Valve Five	10000	2632	214kg / 472lbs	40 +	-	-	-	-	-	100 (26)	12	18kg / 39.6lbs

- ✱ Power requirements 24-28vdc
- ^ Power requirements 3 phase 208vac 400Hz
- ~ Weight of Inline Compressor 9kg / 20lbs
- # Weight of Inline Compressor 11kg / 24lbs
- 0 Weight of Inline Compressor 18kg / 40lbs
- + Weight of Inline Compressor 30kg / 66lbs
- Weight per DC pump 9kg / 20lbs
- Weight per AC pump 38kg / 83lbs
- Comp = Air Compressor either Inline or Compressor Module
- amps = Power requirements 3 phase 208vac 400Hz
- SFP = Foam Injection System
- DC = Direct Current 24-28 volts
- AC = Alternating Current 208 volts, 3 phase

## Optional accessories available for the **Cloudburst Fire Bucket** range



### Foam Injection

Attached to the side wall of the **Cloudburst Fire Bucket**, the **Foam Injection System** can deliver a timed volume of foam to the water within the bucket and is agitated during the water release by our unique pneumatic valve operation.

### Foam Controller

The optional **Foam Controller** ensures the quantity of foam being injected into each load of water is accurate and consistent.



### Long Line

**Long Lines** are manufactured specifically for the bucket and its features, with all necessary service lines encased within the zipped PVC protective cover.



## Inline Compressors

The electrically powered **Inline Compressor** offers a lightweight and compact external load, providing a compressed air supply to the **Monsoon Valve**.

## Level Limiters

**Level Limiters** can be installed if required to limit the volume of water carried within the **Cloudburst Fire Bucket**.

Simply remove the plug to allow the excess volume to be discharged from the bucket during the filling process.



Suitable for  
CB2500M - CB5000M

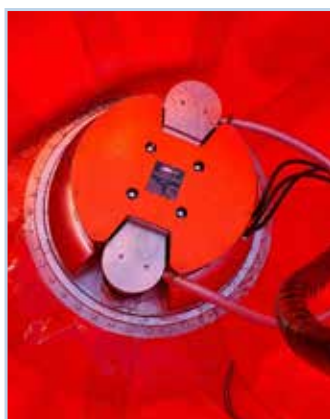


Suitable for  
CB130M - CB2000M



## Shallow Fill Pump DC

Developed to be both effective and easy to use, the 28VDC, 50 amp **Shallow Fill Pump** is built into the Monsoon Valve, providing mechanical protection when the bucket is manoeuvred into tight spaces for filling. With a filling rate in excess of 25 liters (6.6 gallons) per second per pump and a minimum filling depth required of 0.16 meters (6.3 inches) the **Shallow Fill Pump** is a vital tool when available water sources are limited.



## Shallow Fill Pump AC

**Shallow Fill Pump AC**, a 3 phase 208VAC, 50 amp, 400HZ, 10hp pump at a flow rate of 100 liters (26 gallons) per second. This assembly has been designed to bolt onto the shell of the **Cloudburst Fire Bucket**, and is suitable for buckets of 2500 liters (658 gallon) or larger with either a **Monsoon** or **Cyclone Valve** fitted.





## Power Distribution Module

Powered by the aircraft electrical power, the **Power Distribution Module** is a fully integrated system giving you control of all systems on your **Cloudburst Fire Bucket** including valve control, **Foam Injection** timing and **Shallow Fill Pump** control.

## Compressor Module

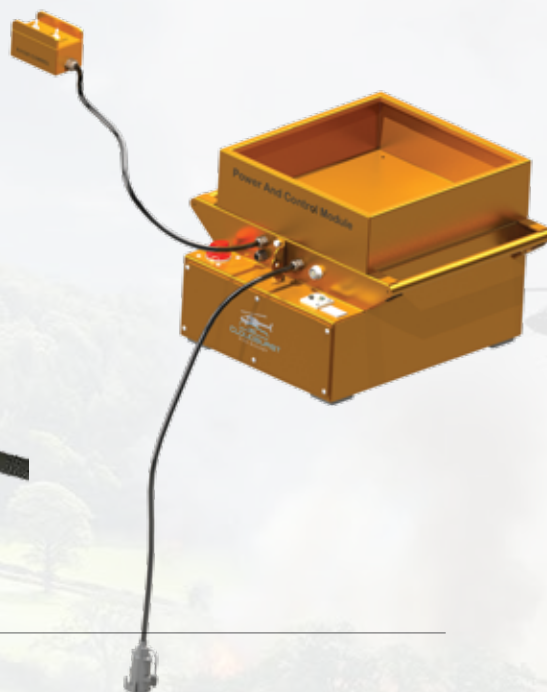
The **Compressor Module** supplies the **Monsoon Valve** with the compressed air supply to operate the multi drop valve. With an air receiver inside this module, coupled with a receiver built into the valve, there is always a large store of compressed air to operate the bucket systems. This module can also incorporate control if required. Discuss this with the supplier.





## Power and Control Module

This module has been designed to provide an auxiliary power supply and control to operate the **Cloudburst Fire Bucket** and associated accessories without the need to draw electrical power from the aircraft's electrical system.



## Carry / Stowage Bag

Compact and tidy, all **Cloudburst Fire Buckets** up to and including the CB2000 come complete with a carry bag.



Achieve a  
fast and  
accurate  
water  
drop.





The 21st century features of the **Cloudburst Fire Bucket** provide rapid filling, fast valve operation, low maintenance and ease of use, making the **Cloudburst Fire Bucket** a wise investment.







**For all your helicopter equipment  
needs, contact us today!**



**IMS New Zealand Limited**

**P.** +64 21 583 033 **E.** [imssales@imsheli.com](mailto:imssales@imsheli.com)

**FB.** [facebook.com/cloudburstfirebucket](https://facebook.com/cloudburstfirebucket)

**[www.imsheli.com](http://www.imsheli.com)**