

# IMS FIRE LIGHTER

ENGINEERED FOR SIMPLICITY.  
DESIGNED FOR RESULTS.

BUILT FOR OPERATORS THE  
IMS FIRE LIGHTER IS THE SAFE  
AND EFFICIENT CHOICE FOR  
CONTROLLED BURN-OFFS

## > KEY BENEFITS

### USER-FRIENDLY DESIGN

Easy to fill, simple to clean

Constructed from corrosion-resistant materials

### COMPLETE PILOT CONTROL

Manual agitation system

Flow rate control

Jettisonable



# IMS FIRE LIGHTER

## > DESIGNED FOR OPERATORS

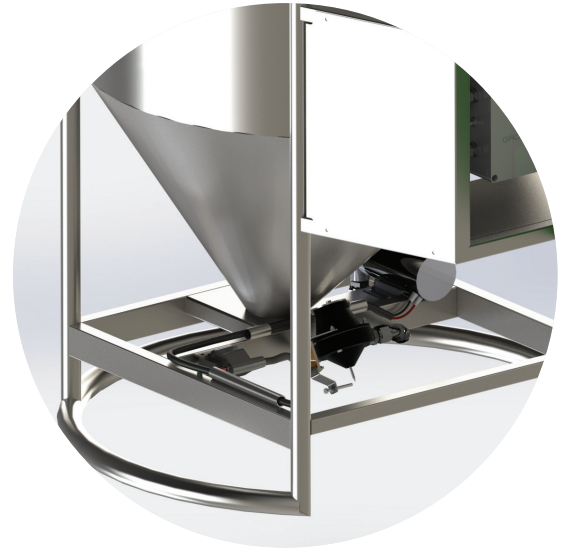
Developed since 2017, the IMS Fire Lighter is a robust and compact fire fighting tool made from corrosion-resistant stainless steel, designed to withstand the harshest environments.

It supports a range of fuel types for fire ignition and can be custom-built in larger volumes if required.

Equipped with built in manual product agitation, the product can be mixed on-site as and when required.

The variable speed pump gives the pilot, or crew, complete control of product delivery/application rates.

The IMS Fire Lighter is strong, fire resistant and as light as 65.5kgs (GE220F L) while retaining good flight characteristics.



### CAPACITY

MODEL	LITRES <i>Capacity</i>	US GALLONS <i>Capacity</i>
GE220F L	220	57.9

*Other volumes available on request*

#### IMS New Zealand Limited

**P** +64 21 583 033

**E** [imssales@imsheli.com](mailto:imssales@imsheli.com)

**FB** [facebook.com/imshelicopter](https://facebook.com/imshelicopter)

**IG** [instagram.com/imsheliworldwide](https://instagram.com/imsheliworldwide)

**LI** [linkedin.com/company/ims-new-zealand](https://linkedin.com/company/ims-new-zealand)

**W** [imsheli.com](https://imsheli.com)